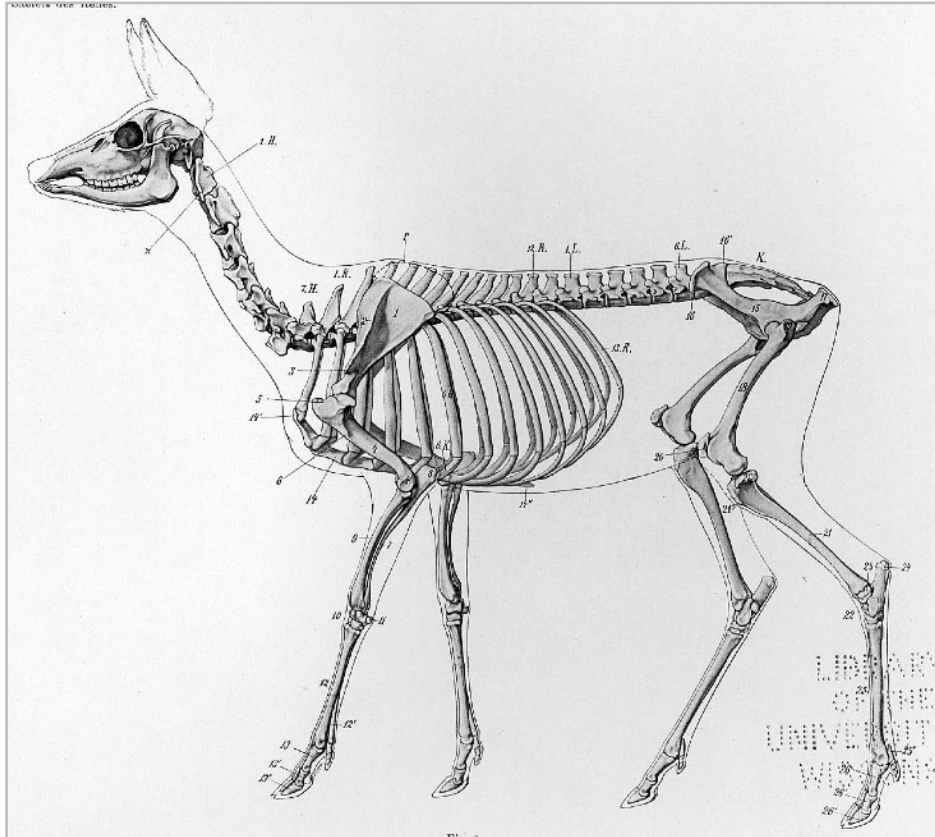


The Skeletal System

Deer skeleton

Comparative Anatomy



Find the equivalent bones of the deer legs in your arms and legs.

Label the deer's knees, heels, "elbows" and wrists on this diagram.

Chicken leg

Connecting bones to muscles

Find and twang your stringy tendons behind your knee.
Feel along one of your tendons to find the muscle at one end and bone at the other.

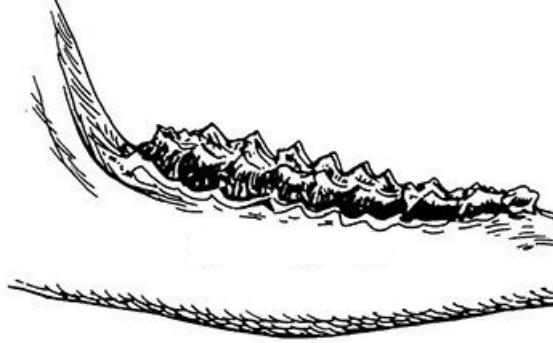
Put on gloves if you will handle the chicken.
Find the tendons on the dissected chicken leg. Your tendons look just like this, but are larger.
Pull on the chicken tendons to see how strong they are.

Jaw bones

Comparative Anatomy

Carefully handle the jawbones from moose, deer and mouse.

Measure the size of molars in two of the animals and record the dimensions here:



Cow bone slices

Bone Structure

Please handle the pieces carefully as they are delicate.

Solve the bone puzzles.

View bone slice against the light, to see the structure of the “spongy bone”.

Marine mammal limb bones

Joints

These bones are from two sides of the same animal.

Fit each side together.

Sketch the femur, and the end of the connecting bones.

Label the type of joint at each end of the femur

- hinge joint
- ball and socket joint

